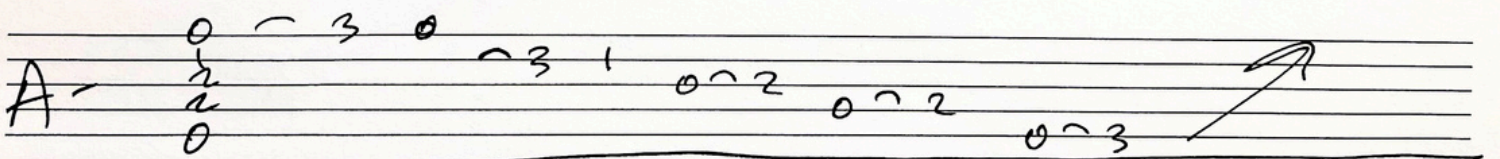
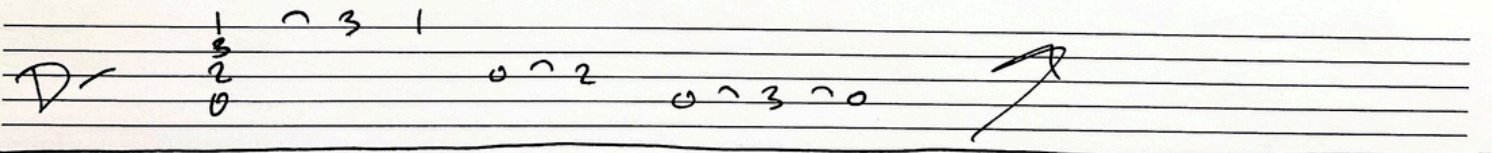
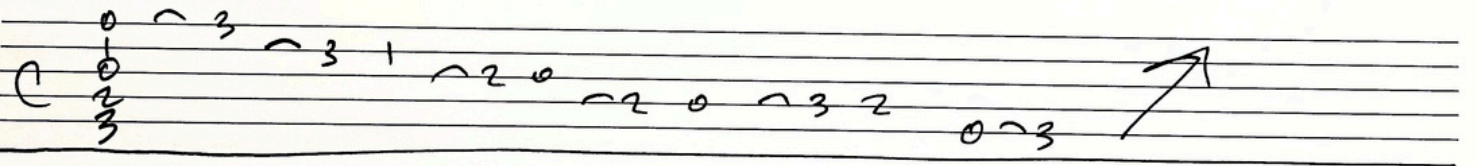
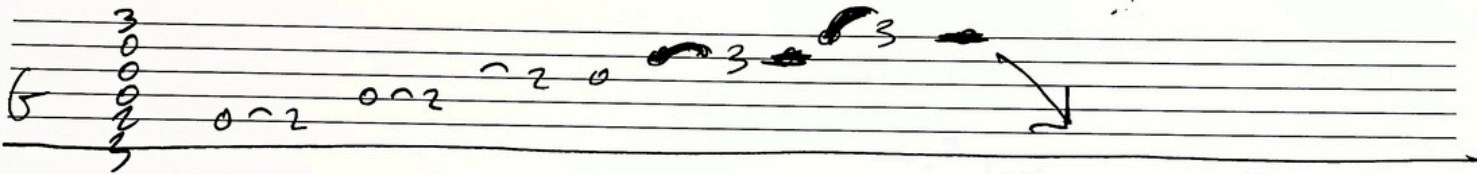
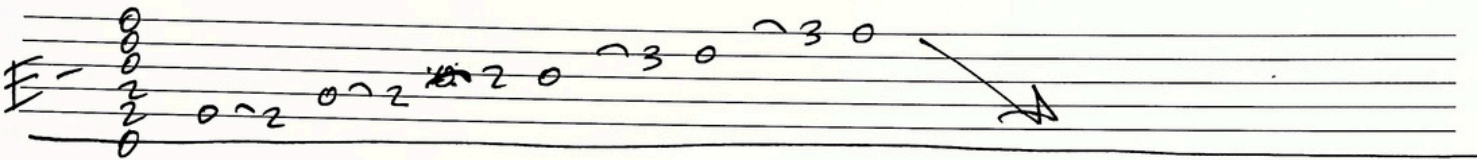
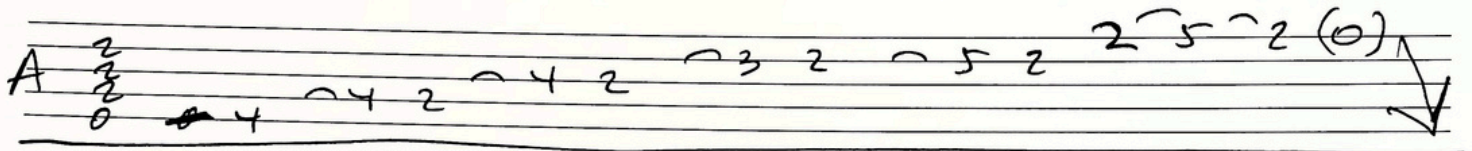
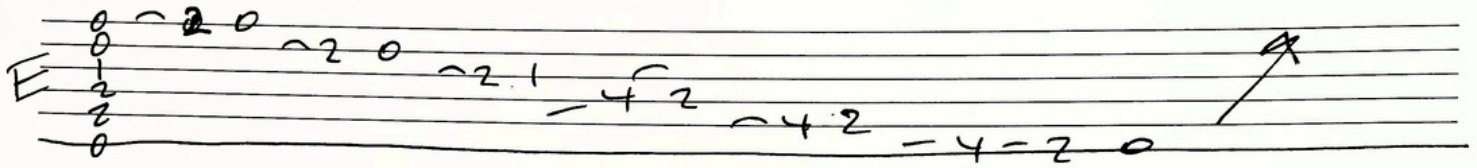


Improvising with Hendrix Style Chord Embellishments

RandyAdamsMusic.com

Let's try some open position CAGED shapes and consider how these transfer to other positions.

Experiment with different string combinations, hammer ons, pull offs, slides, etc.



★ consider what scales may be associated with each chord within the context of the tune. These will usually be good notes

Some choices to consider are any pentatonic scale or other scale that might be associated with that chord within the context of the tune. Consider notes that are parts of major and minor blues as well as those that are part of the vibe.

If you would like to study privately with me click the link below for info

RandyAdamsMusic.com